

3/8" STONE

INFORMATION



SELECTION

3/8" x 3/8" x 3/8"

39 Colors

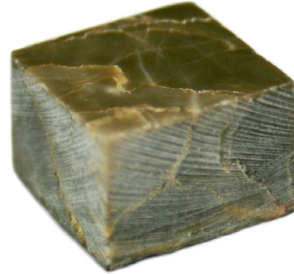
All colors available in Polished, Tumbled & Honed finishes

APPLICATIONS:

Residential/Commercial

Indoor/Outdoor

Wall/Flooring



Artaic Name					3/8" Polished/Honed Stone	3/8" Tumbled Stone
Artaic Inventory ID						
ASTM						
NOTES: All values vary across different types of stone. All Artaic stone passes ASTM standards for commercial floor use.						
ASTM C-97: Density	Min lb/ft ³ (g/cm ³) = 162 (2.59) for structural use.				162.3 - 193.5 (2.60 - 3.095)	162.3 - 193.5 (2.60 - 3.095)
ASTM C-97: Water Absorption	Impervious ≤ 0.5%	Vitreous 0.5-3%	Semi-Vitreous 3-7%	Non-Vitreous 7-20%	< /= 0.3% - Impervious	< /= 0.3% - Impervious
ASTM C-99: Modules of Rapture	Min psi (MPa) = 1000 (6.89) for structural use.				2235.12 - 4136.43 (15.4-28.5)	2235.12 - 4136.43 (15.4-28.5)
ASTM C170: Compression Strength	Min psi (MPa) = 7500 (52) for structural use.				10,570 - 33,011 (72.9-227.6)	10,570 - 33,011 (72.9-227.6)
ASTM C-241: Abrasion Resistance	Min Hardness = 10 for structural use.				18 - 25	18 - 25
ASTM C-424: Cracking Resistance	One cycle pass-or-fail test				Pass	Pass
ASTM C-880: Flexural Strength	Min psi (MPa) = 1000 (6.89) for structural use.				1117.56 - 5413.64 (7.7 - 37.3)	1117.56 - 5413.64 (7.7 - 37.3)
ASTM C-499: Facial & Thickness Dimensions	Nominal Size	Value			0.375" x 0.375"	0.374" x 0.374"
	Caliber Range	Value			Range: 0.027"	Range: 0.027"
	Thickness	Value			0.375"	0.315"
Artaic Production SQFT: Dimensions	Nominal Size - Inches		Value		11.7261" x 11.7261"	11.7934" x 11.7934"
Artaic Production SQFT: Dimensions	Tile Count		Value		27 x 27	27 x 27
Artaic Production SQFT: Tiles / SQFT	Tile Count		Value		712	712
Artaic Production SQFT: Weight (no grout)	LBS		Value		3.98	3.98
Artaic Production SQFT: Weight (with grout)	LBS		Value		4.48	4.33
Artaic Production SQFT: Grout Width	Nominal Size - Inches		Value		0.0625	0.063
ASTM C-1028: Static Coefficient of Friction	C.O.F. 0 ≤ to ≤ 0.39 0.40 ≤ to ≤ 0.59 0.60 ≤ to ≤ 0.79 ≥ 0.80	Resulting Classification Hazardous - Excessive: No floor use Satisfactory: Low to regular traffic residential use Satisfactory: Light traffic commercial use Excellent: All uses			Wet: 61 - Satisfactory Dry: 81 - Excellent	Wet: 61 - Satisfactory Dry: 81 - Excellent
ASTM C-1378: Staining Resistance	Resistance Class A B C D E	Max. # of samples that retain a stain 0 1 2 3 4 or more			Pass - Class A	Pass - Class A

SEALANTS

NOTES: Honed and tumbled stone needs to be sealed to prevent staining. Sealants have a negligible impact on metrics above.

Scenario 1 - Normal Sealing	For walls, backsplashes, etc., use a simple "Grout & Tile Sealer" solution available from several brands at many hardware stores
Scenario 2 - Color enhanced Normal Sealing	For walls, backsplashes, etc., where a slight enhancement/darkening of the stone's natural color is desired, use a "Stone Enhancer & Sealer" available from several brands at many hardware stores.
Scenario 3 - Sealing for Floor Use	For high traffic floor applications, use a "Penetrating Stone, Grout & Tile Sealer" available from several brands at many hardware stores.